



Hotels with park and pool in Viterbo

Price: € 2,500,000.00

Reference Code: 11714

Description

Exclusive 4 Star Hotel in Tuscia - Viterbo

Location:

A few minutes from the center of Viterbo, immersed in the picturesque countryside of Tuscia, this splendid 4-star agriturismo hotel is located in an ancient farmhouse from the 1700s, finely restored and equipped with a swimming pool, large garden and high-level services near the natural thermal baths, located just 5 km from Viterbo and 43 km from the Vallelunga racetrack,

Property Description:

The complex covers a well-kept private park of about 5,000 sqm. It houses an outdoor swimming pool, private parking, garden, common room with bar and refined dining room. The property, divided into three independent bodies, includes 18 units including suites, double and single rooms, many of which have their own entrance, balcony or exclusive open space. completes the property an underground cave utilized as a SPA.

Condition and Finishes:

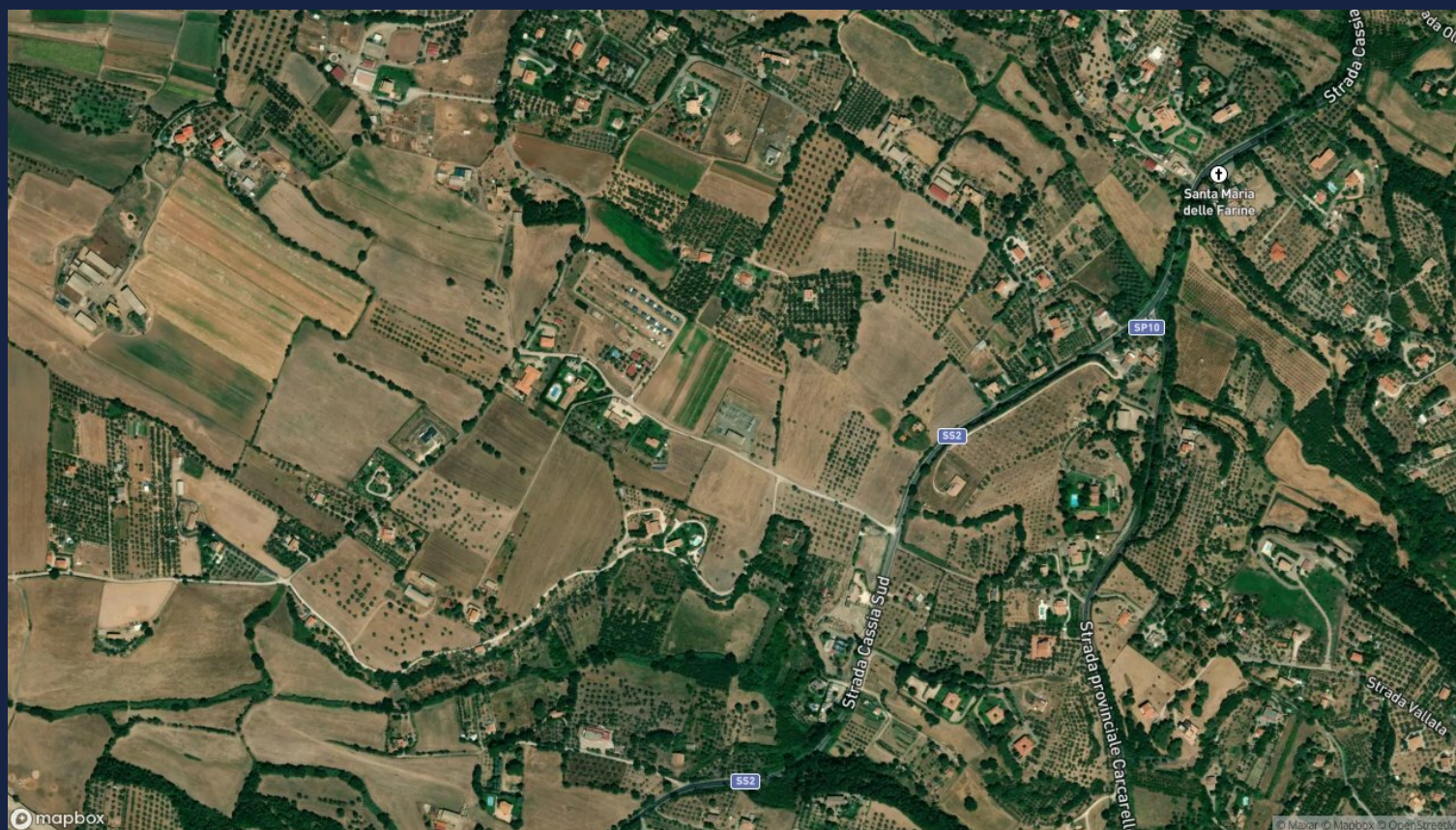
The rooms, fully furnished with fine finishes, offer a refined and relaxing atmosphere. Exposed wooden beams, mansard roofs, terracotta or parquet floors and elegant furnishings combine harmoniously with modern comforts such as soundproofing, air conditioning, free WiFi, flat-screen satellite TV and minibar.

Potential Use:

This exclusive property is perfect for charming couple or family stays, corporate events and luxury retreats. Less than 40 minutes from Rome, it represents a unique investment opportunity in the hospitality industry, combining traditional charm with modern amenities.

Rooms	Bathrooms	Square Footage	Garden/Terrace	Energy Class	Status
40	12	800 Sq. Ft.	5000 Sq. Ft.	G	Ottimo - Ristrutturato

Location Overview



Accessibility Highlights

SEA-LAKE

HIGHWAY

TRANSPORT

SERVICES

PARKING

50 Km

35 Km

3 Km

4 Km

0 m

Additional Points of Interest: Posizionato a 5 km dal centro di Viterbo,
15 km dal lago di Vico
a 43 km da Autodromo di Vallelunga
a 80 km da Roma



























































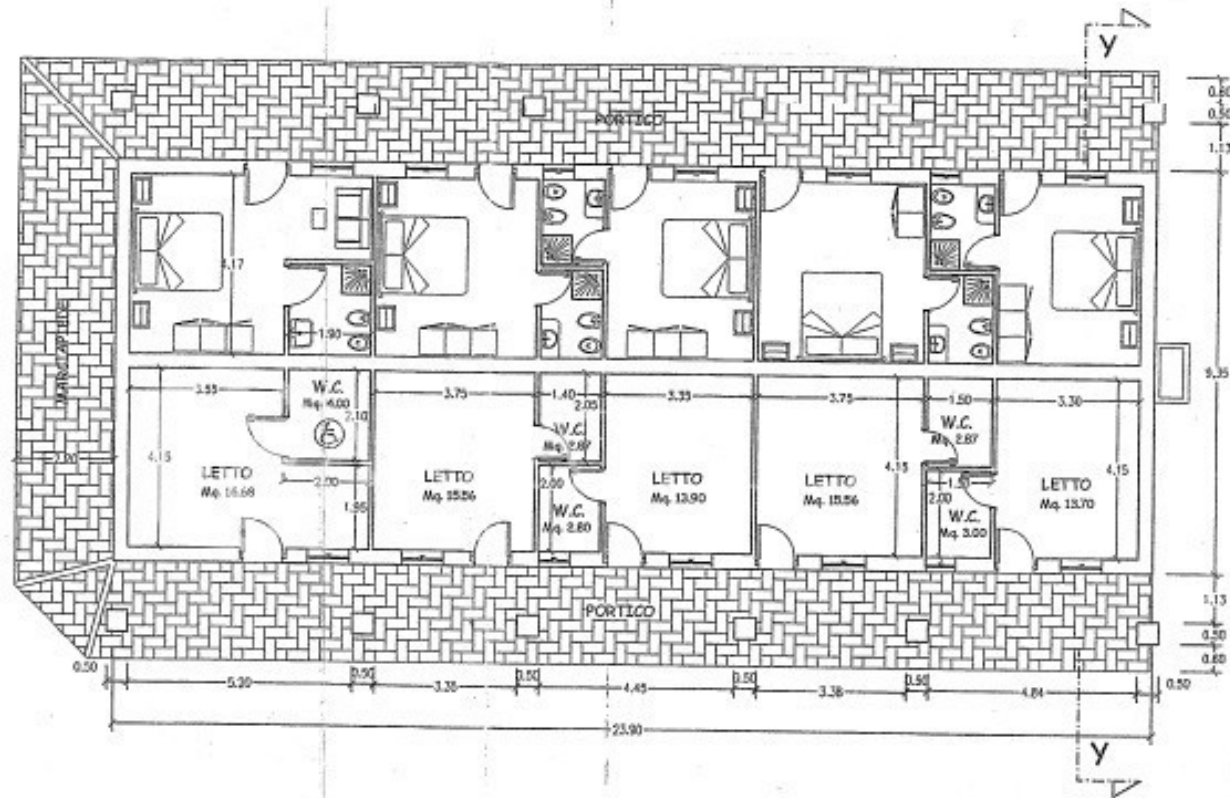






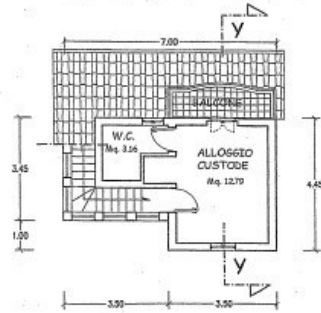




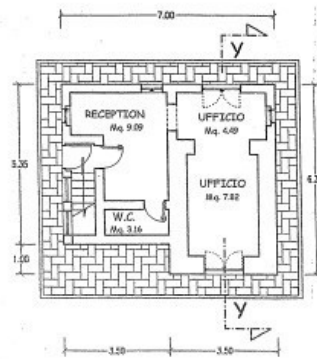


PIANTA PIANO TERRA

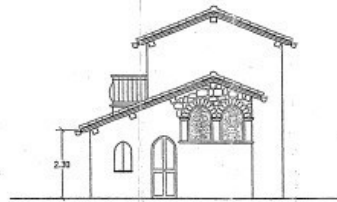
FABBRICATO "B"



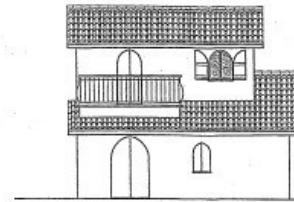
PIANTA PIANO PRIMO



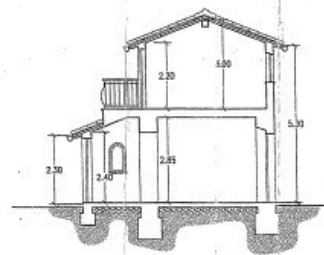
PIANTA PIANO TERRA



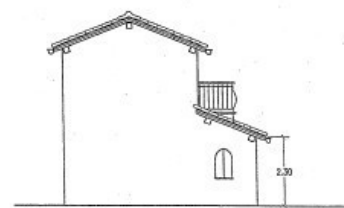
PROSPETTO NORD



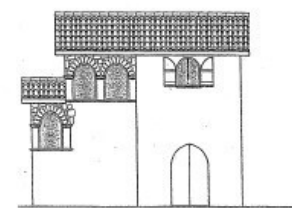
PROSPETTO EST



SEZIONE Y-Y

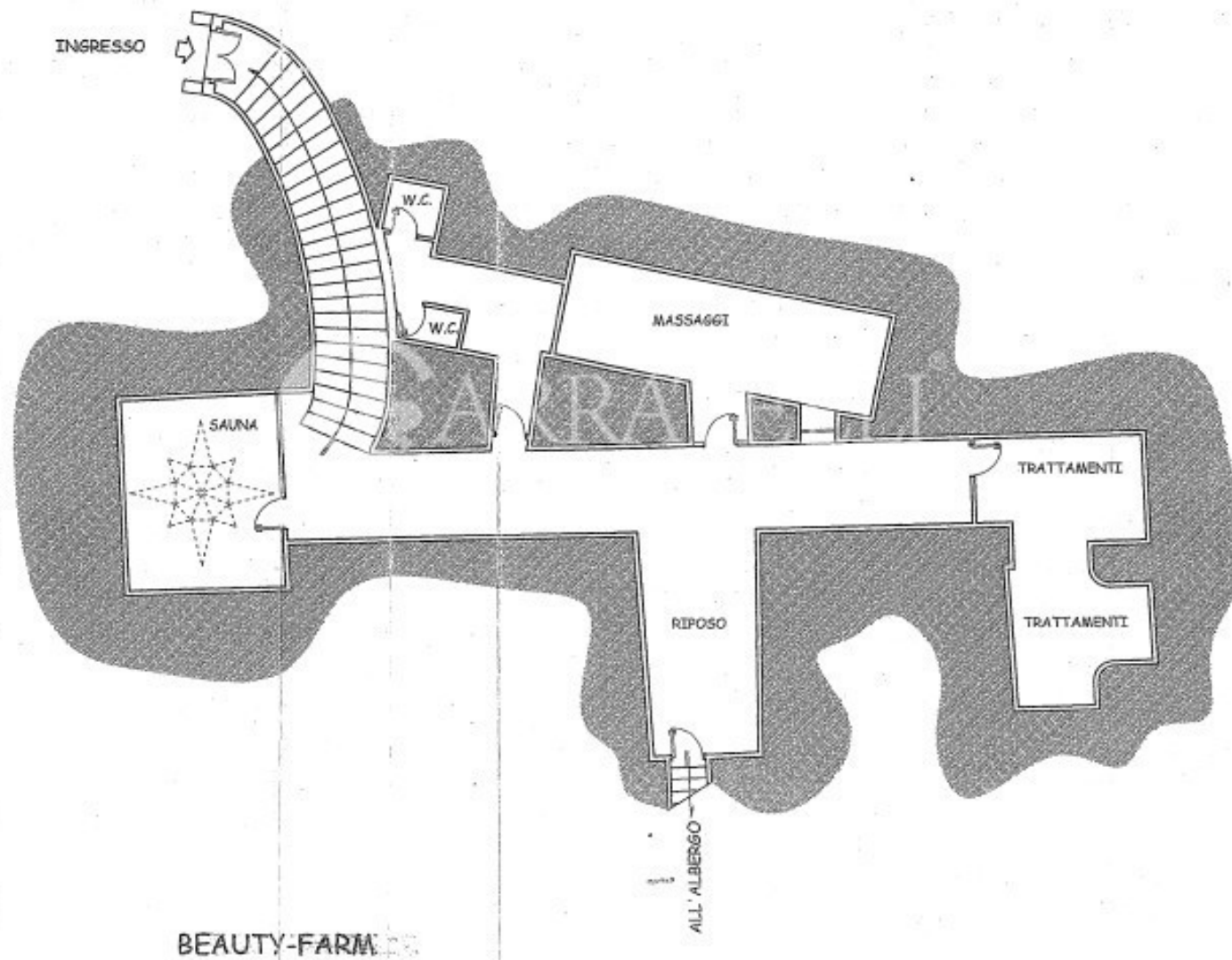


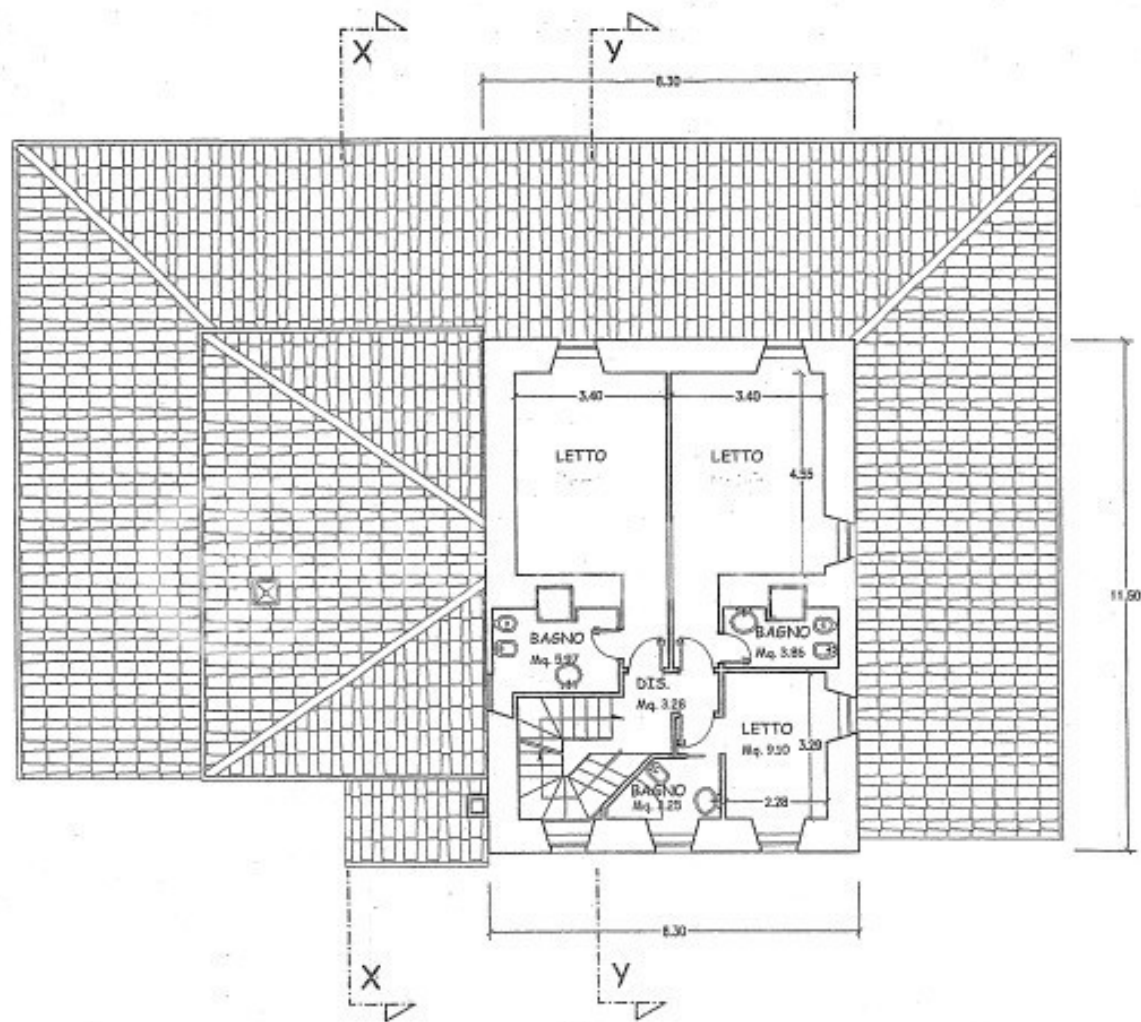
PROSPETTO SUD



PROSPETTO OVEST

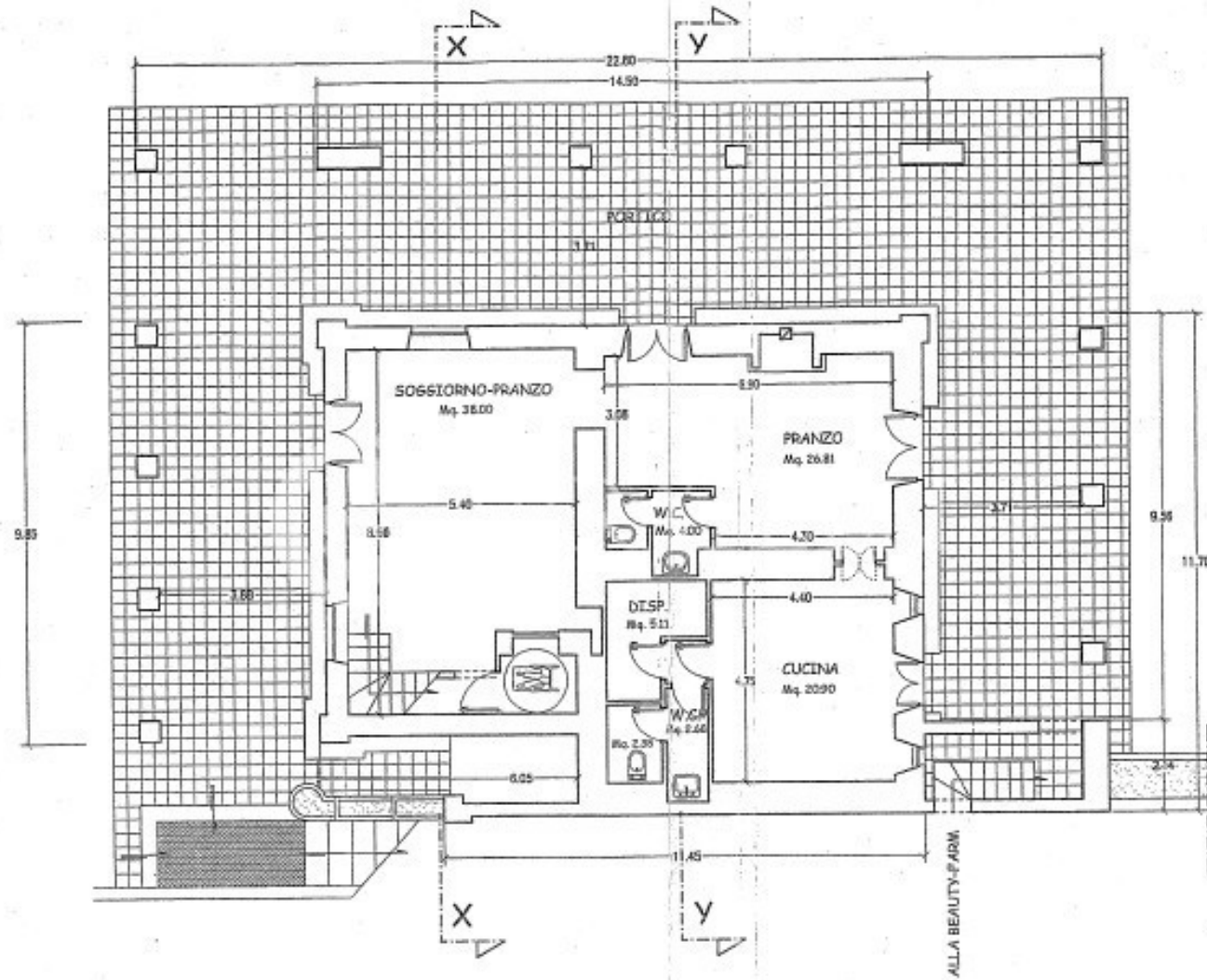
BEAUTY-FARM "D"



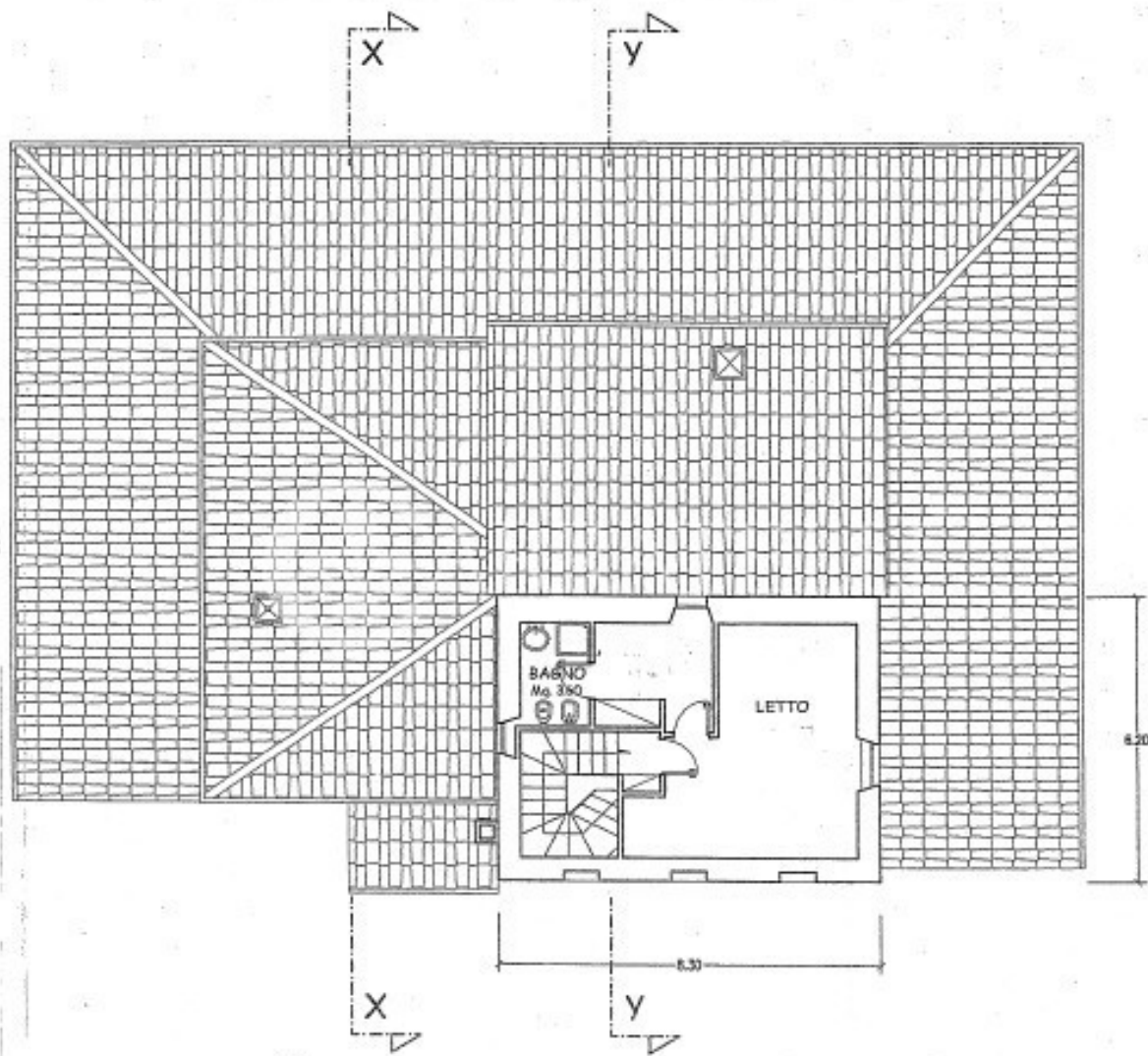


PIANTA PIANO SECONDO

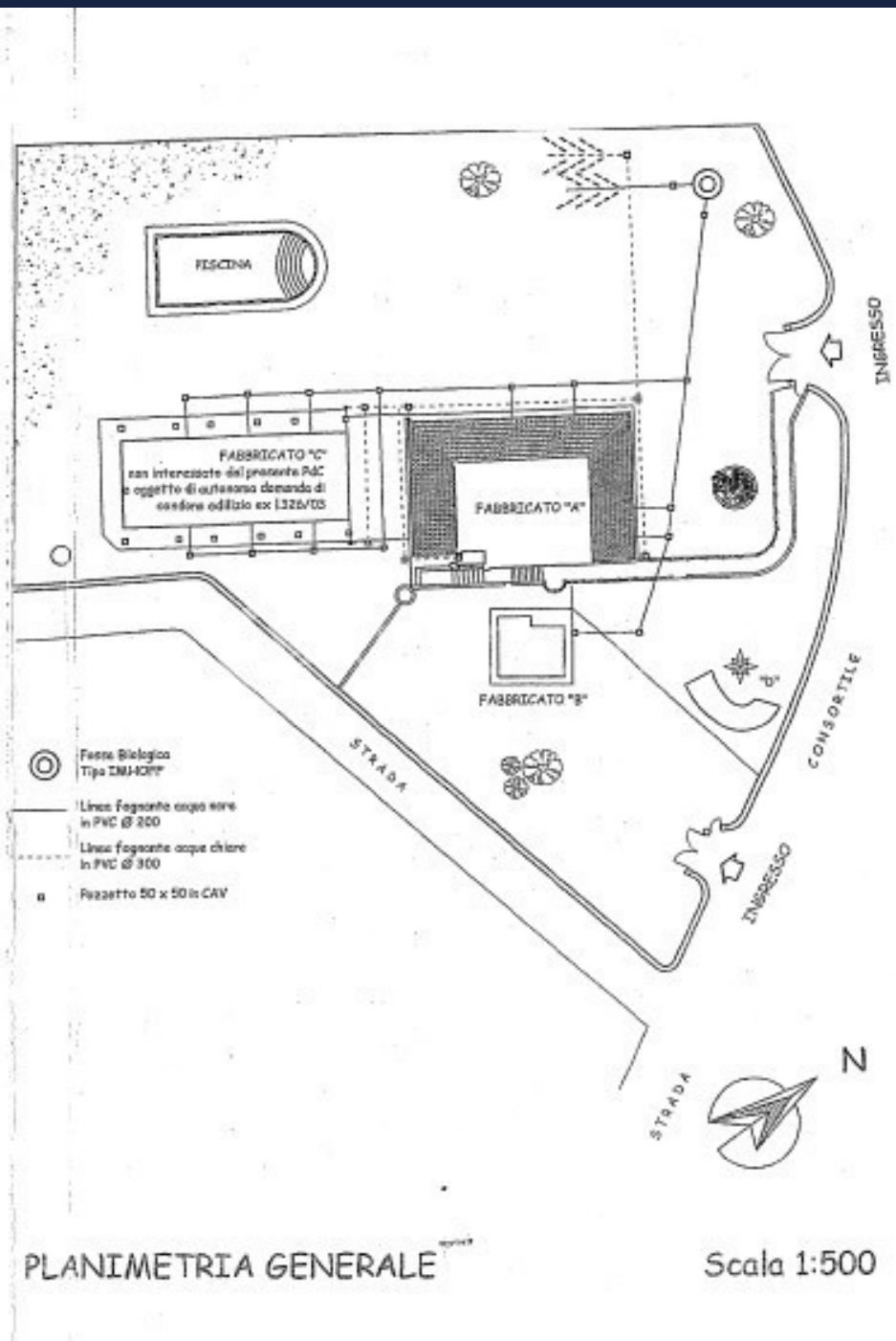
FABBRICATO "A"

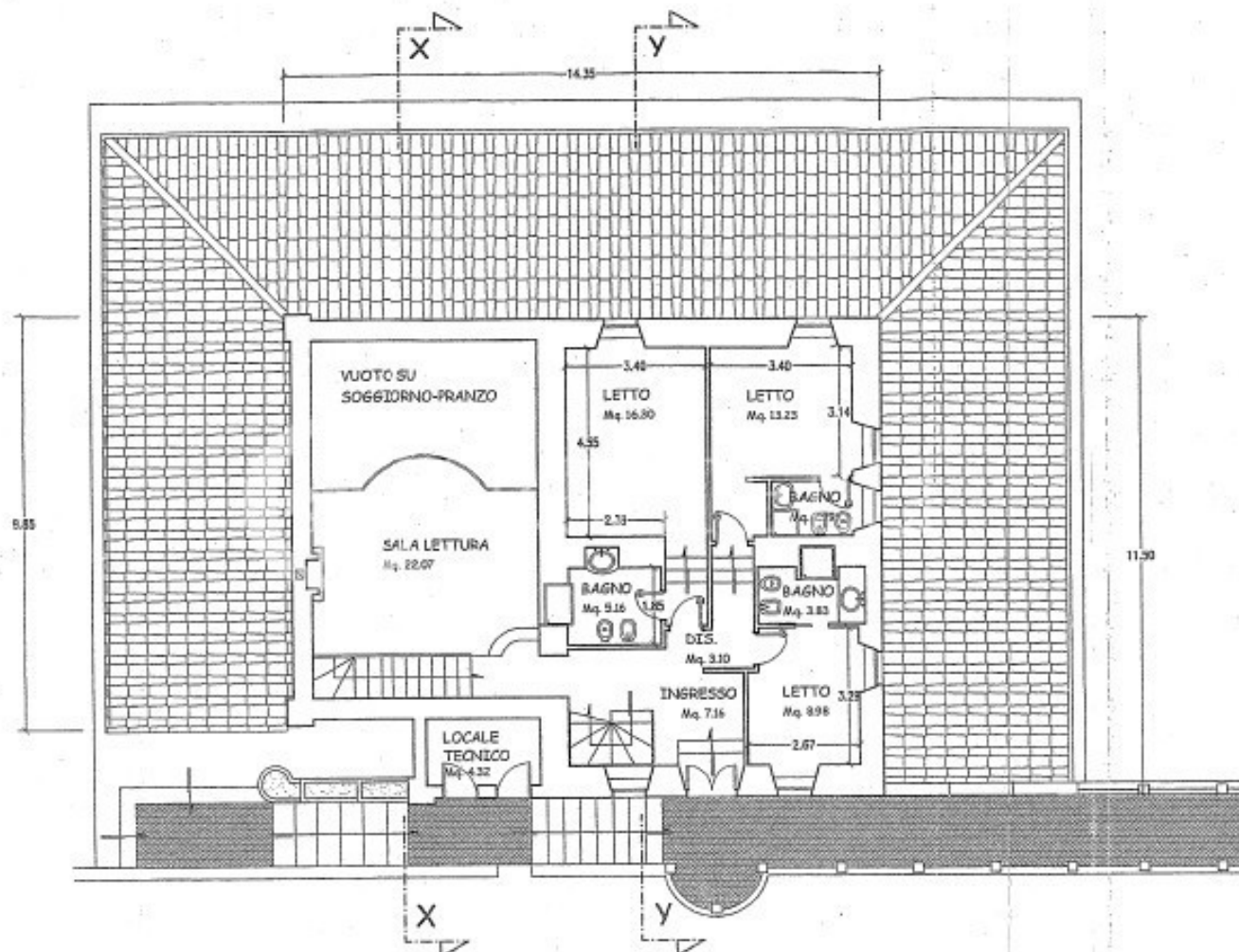


PIANTA PIANO TERRA

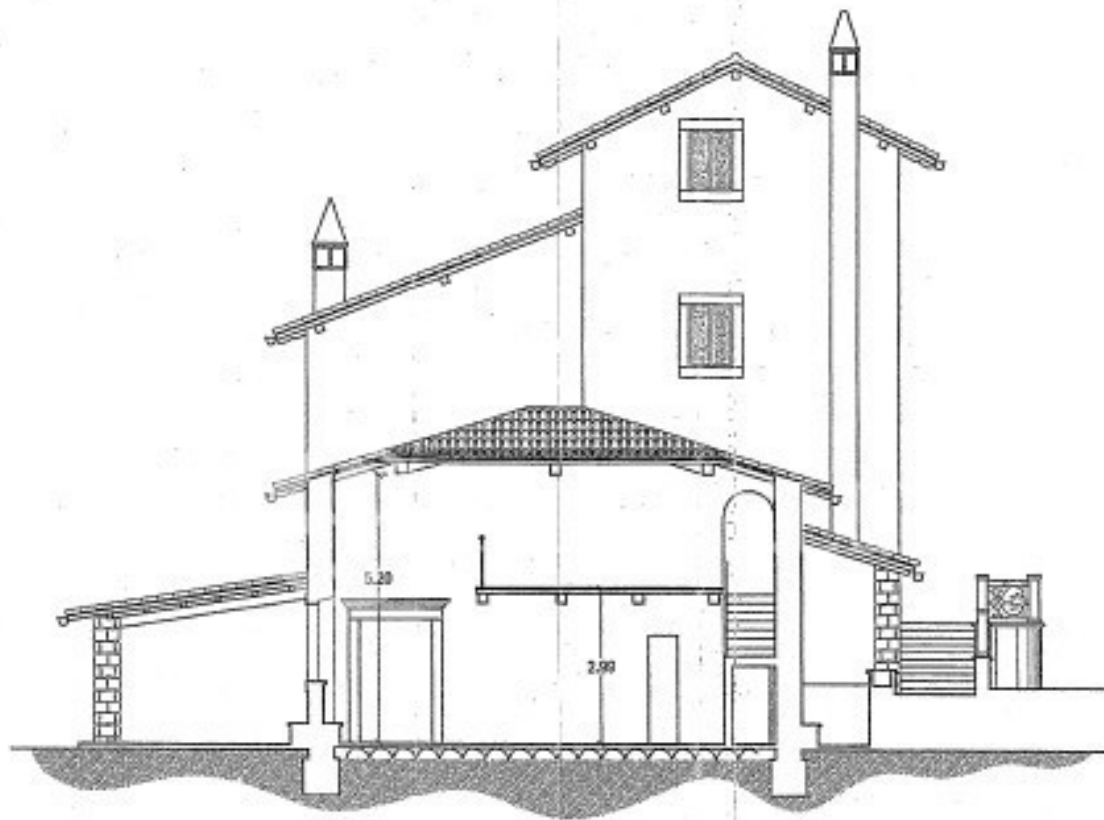


PIANTA PIANO TERZO

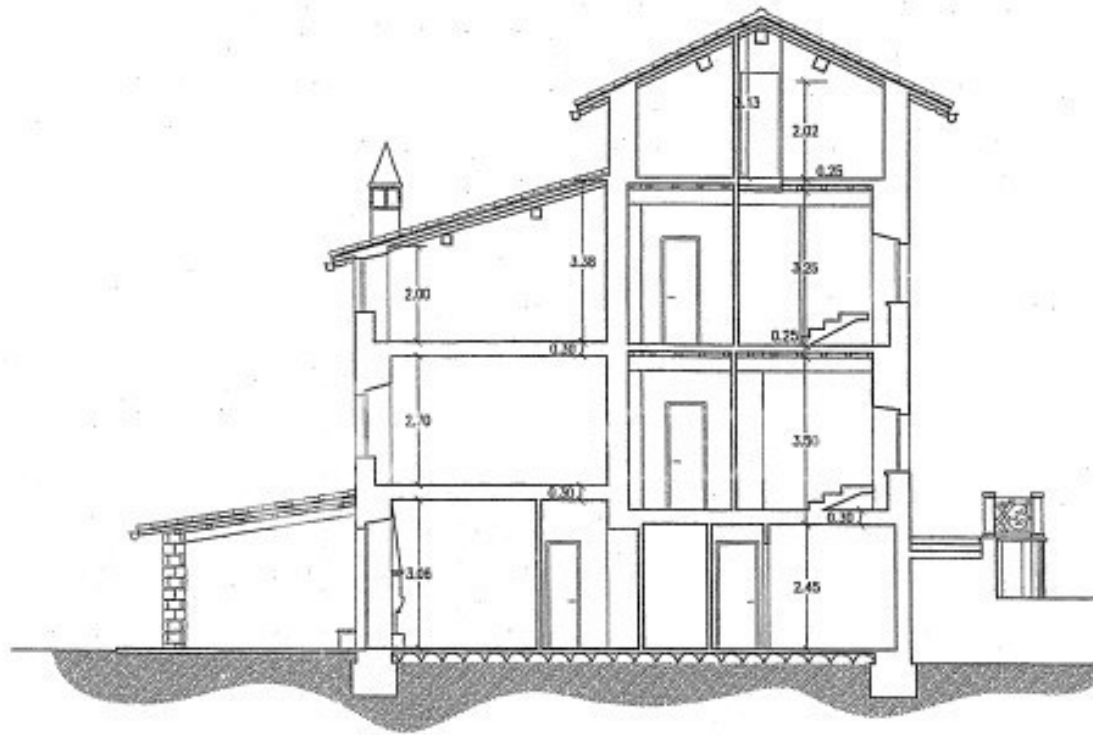




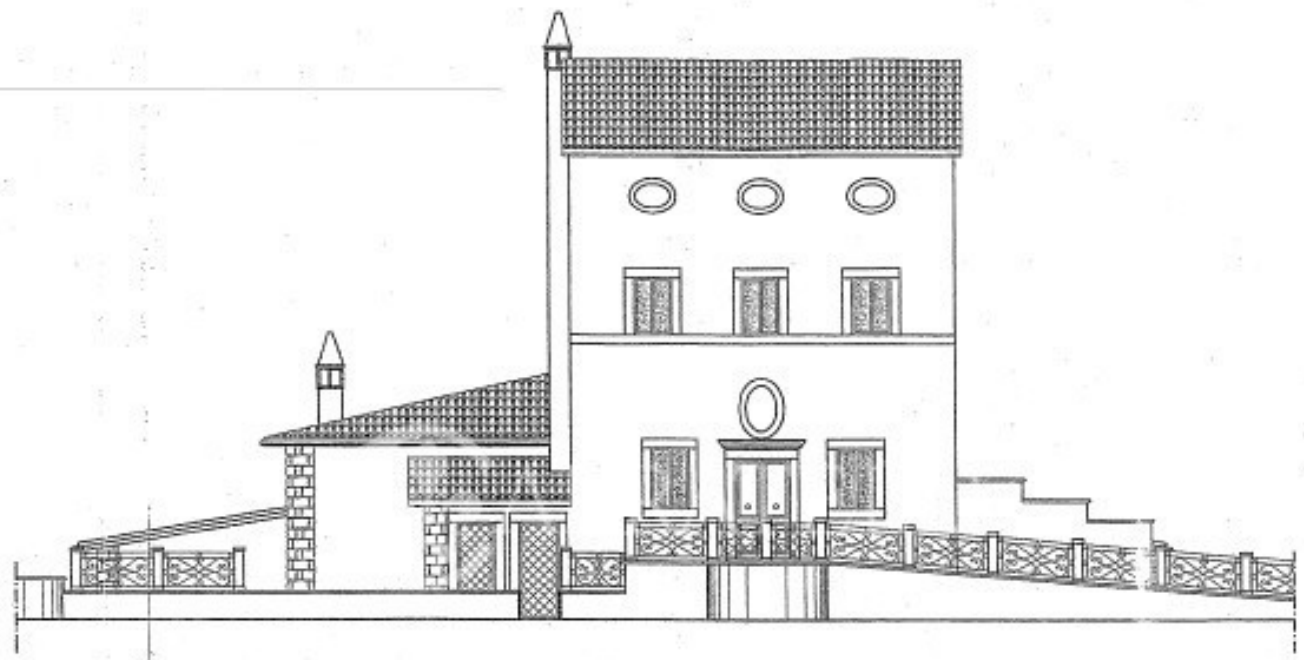
PIANTA PIANO PRIMO



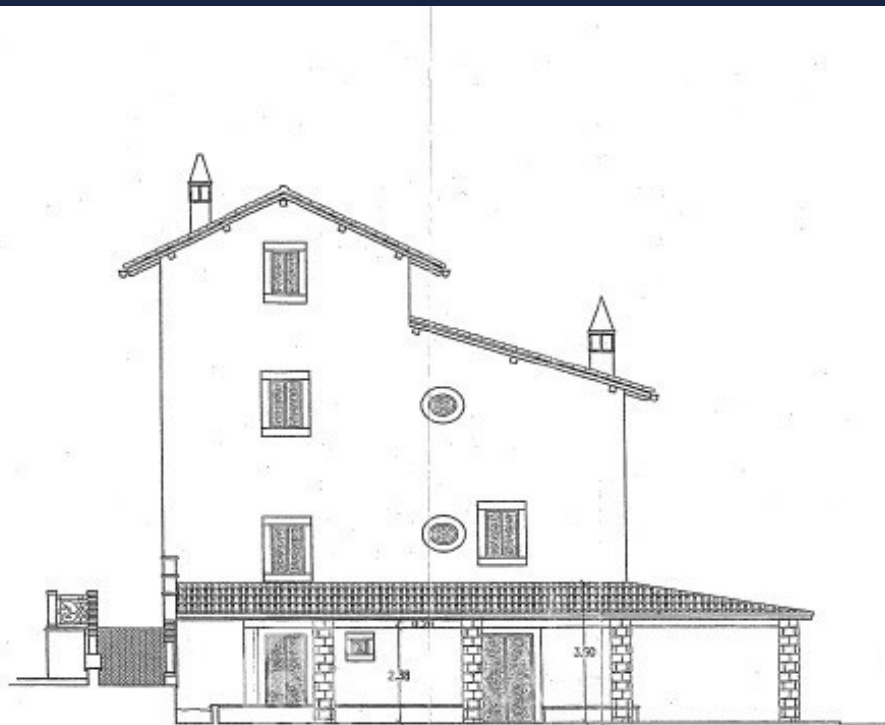
SEZIONE X-X



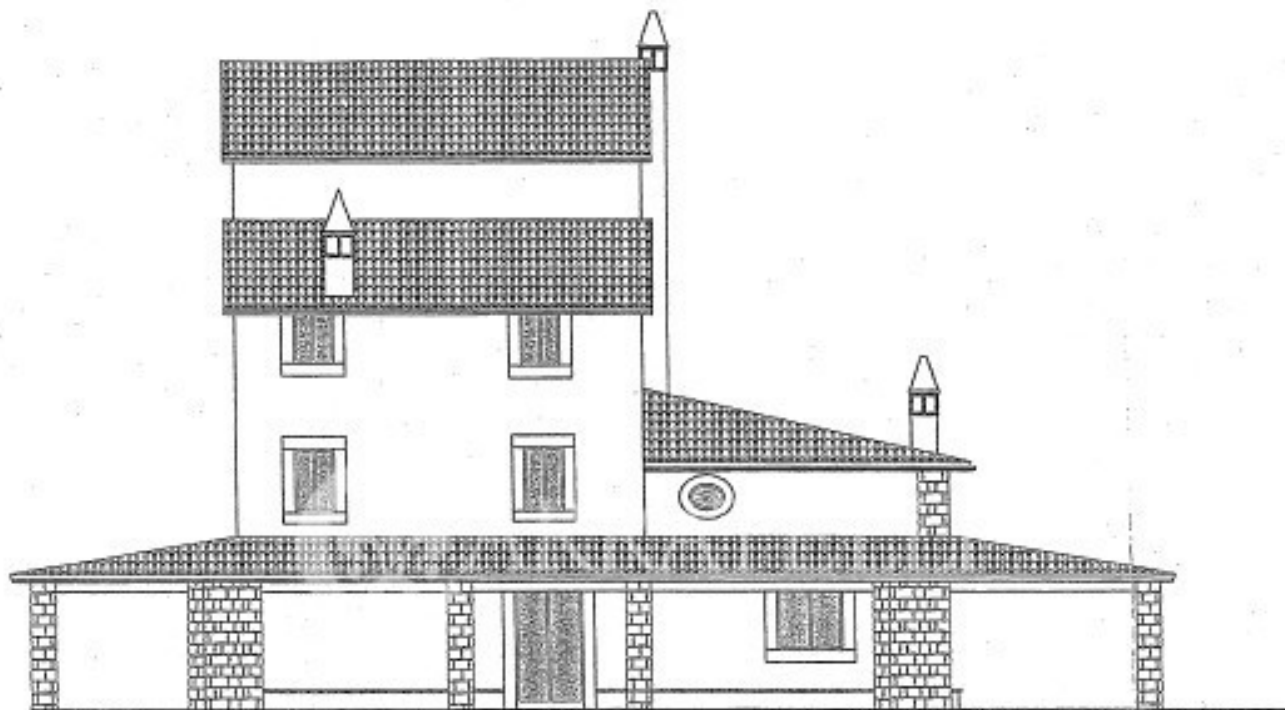
SEZIONE Y-Y



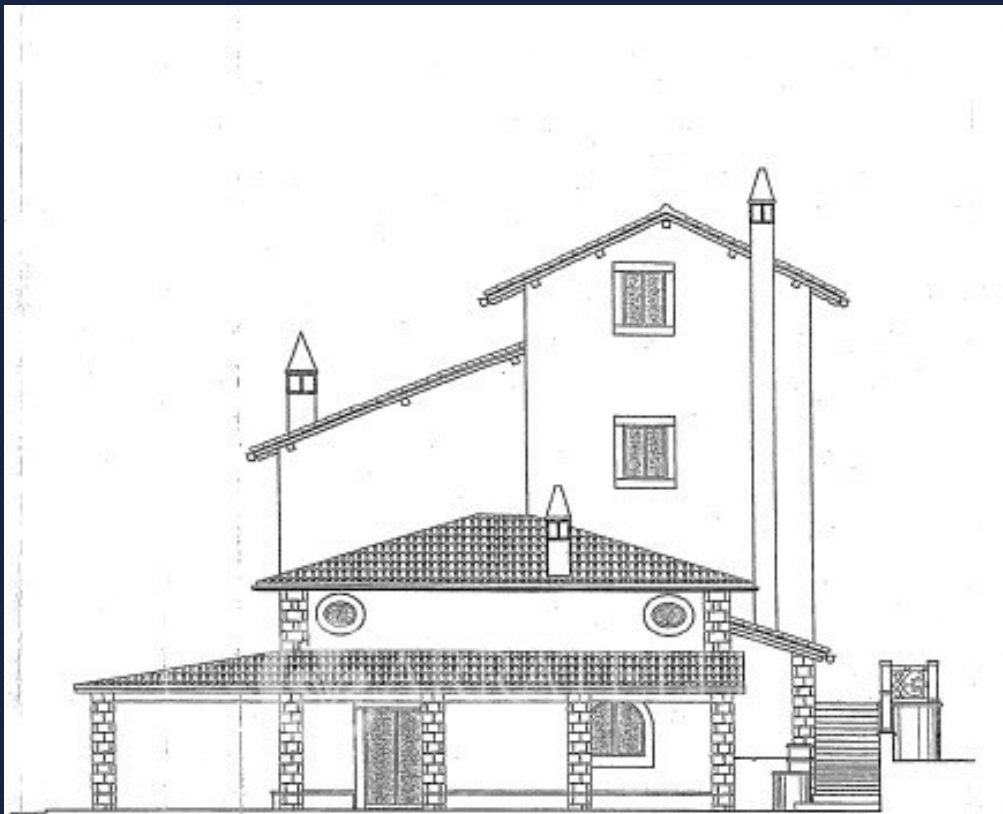
PROSPETTO EST



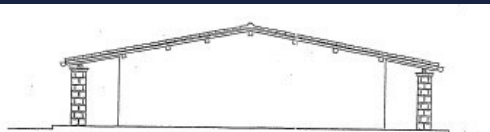
PROSPETTO NORD



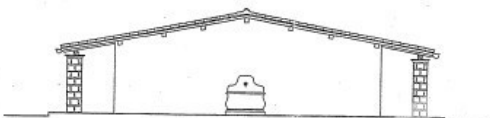
PROSPETTO OVEST



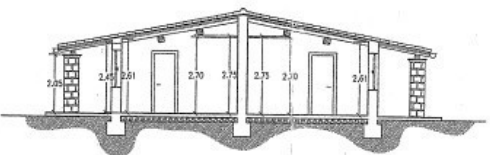
PROSPETTO SUD



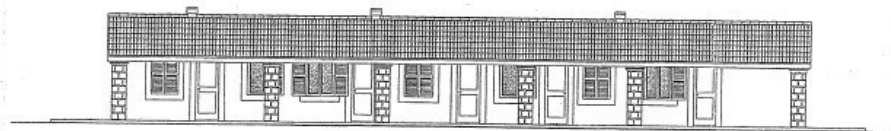
PROSPETTO SUD



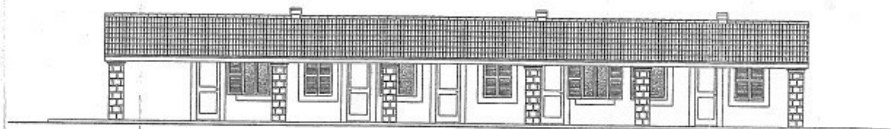
PROSPETTO NORD



SEZIONE Y-Y



PROSPETTO OVEST



PROSPETTO EST



ROMA

Via di San Giacomo, 18
00187 Roma
Tel: (+39) 0693054569
info@luxuryhomes.it

FIRENZE

Via Roma, 4
50123 Firenze
Tel: (+39) 055212893
firenze@luxuryhomes.it



CETONA

Piazza G. Garibaldi, 29
53040 Cerona (SI)

PIENZA

Loc. Botteghino di Palazzo Massaini, 9
53026 Pienza (SI)

MONTEPULCIANO

Via di Gracciano del Corso, 6
53045 Montepulciano (SI)

GROSSETO

Via A. Bertani, 16
58100 Grosseto

