



Firenze Panoramic Penthouse Ponte Vecchio

Price: € 9,000,000.00

Reference Code: 11488

Description

Located in the beating heart of Florence, just steps from the famous Ponte Vecchio and the Uffizi this prestigious penthouse and super penthouse represents a unique opportunity to experience the city in all its beauty and sophistication. With a total area of 600 square meters, this residence is a fusion of contemporary elegance and historic charm, offering an unparalleled living experience.

Access to the penthouse is served by a modern elevator that leads directly to the private entrance. Once you cross the threshold, you are greeted by a spacious foyer that introduces you to the interior spaces, characterized by high-quality finishes and unique architectural details. Natural lighting takes center stage, thanks to large windows overlooking breathtaking views of the city and surrounding hills.

The living area is a triumph of style and functionality. The generously sized living room is ideal for relaxing moments or hosting guests, with a well-defined living area and a dining area that invites convivial dinners.

One of the highlights of this charming property is undoubtedly its panoramic terraces, true hanging gardens that offer unparalleled views of Florence's monuments, from the Duomo to Palazzo Vecchio. These outdoor spaces are perfect for hosting events, dining under the stars or simply enjoying a quiet moment surrounded by the beauty of the city.

The property is complemented by a reserved parking space, a rarity in downtown Florence, allowing convenient and convenient access into the city. The strategic location makes it easy to explore the artistic and cultural wonders of the city, with exclusive boutiques, gourmet restaurants and art galleries within easy reach.

The wonderful abode near the Ponte Vecchio is not just a residence, but a true lifestyle. Perfect for those seeking an oasis of elegance and comfort, it represents a smart investment in one of the most beautiful cities in the world, where every day is an opportunity to experience history and art in an exclusive and refined setting. A rare opportunity to own a corner of Florentine paradise.

Rooms	Bathrooms	Square Footage	Garden/Terrace	Energy Class	Status
15	5	600 Sq. Ft.	0 Sq. Ft.	G	Ottimo - Ristrutturato

Location Overview



Accessibility Highlights

SEA-LAKE

HIGHWAY

TRANSPORT

SERVICES

PARKING

180 Km

7 Km

100 Km

100 Km

20 m

Additional Points of Interest: Aeroporto di Firenze 10 km (0'28)

Centro storico di Firenze 100 m (0'02); Siena 78 km (1'08); Forte dei Marmi 124 km (1'28); Livorno 105 km (1'24)

Ristorante 130 m (0'02); Bar 290 m (0'04); Banca 270 m (0'04)























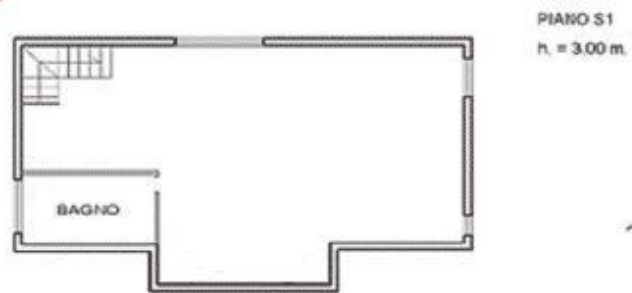
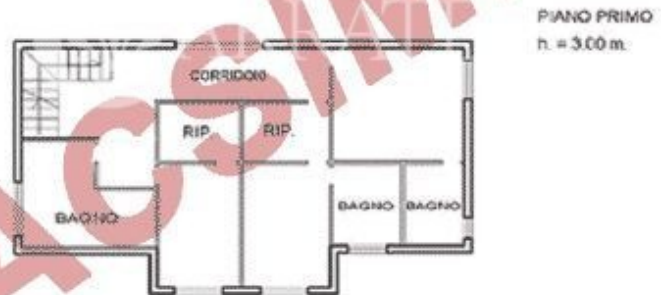
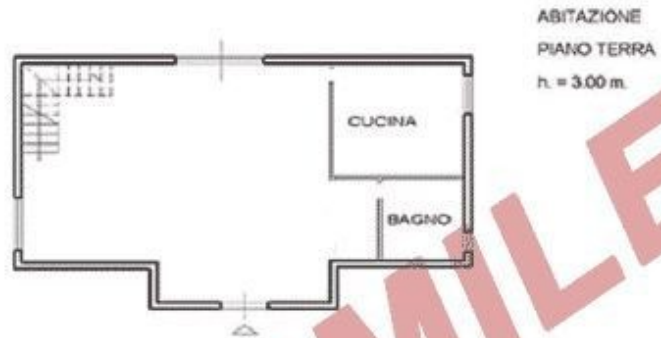




Agenzia delle Entrate
CATASTO FABBRICATI
Ufficio Provinciale di

Dichiarazione protocollo n. del	
Planimetria di u.i.u. in Comune di	
Via Voghera olv. S1	
Identificativi Catastali:	Compilata da:
Sezione:	Iscritto all'albo:
Foglio: 27	Prov. N.
Particella: 26	
Subalterno: 1	

Scheda n. 1 Scala 1:200





ROMA

Via di San Giacomo, 18
00187 Roma
Tel: (+39) 0693054569
info@luxuryhomes.it

FIRENZE

Via Roma, 4
50123 Firenze
Tel: (+39) 055212893
firenze@luxuryhomes.it



CETONA

Piazza G. Garibaldi, 29
53040 Cerona (SI)

PIENZA

Loc. Botteghino di Palazzo Massaini, 9
53026 Pienza (SI)

MONTEPULCIANO

Via di Gracciano del Corso, 6
53045 Montepulciano (SI)

GROSSETO

Via A. Bertani, 16
58100 Grosseto

