



????????? ?????? ?????? ? ????????????

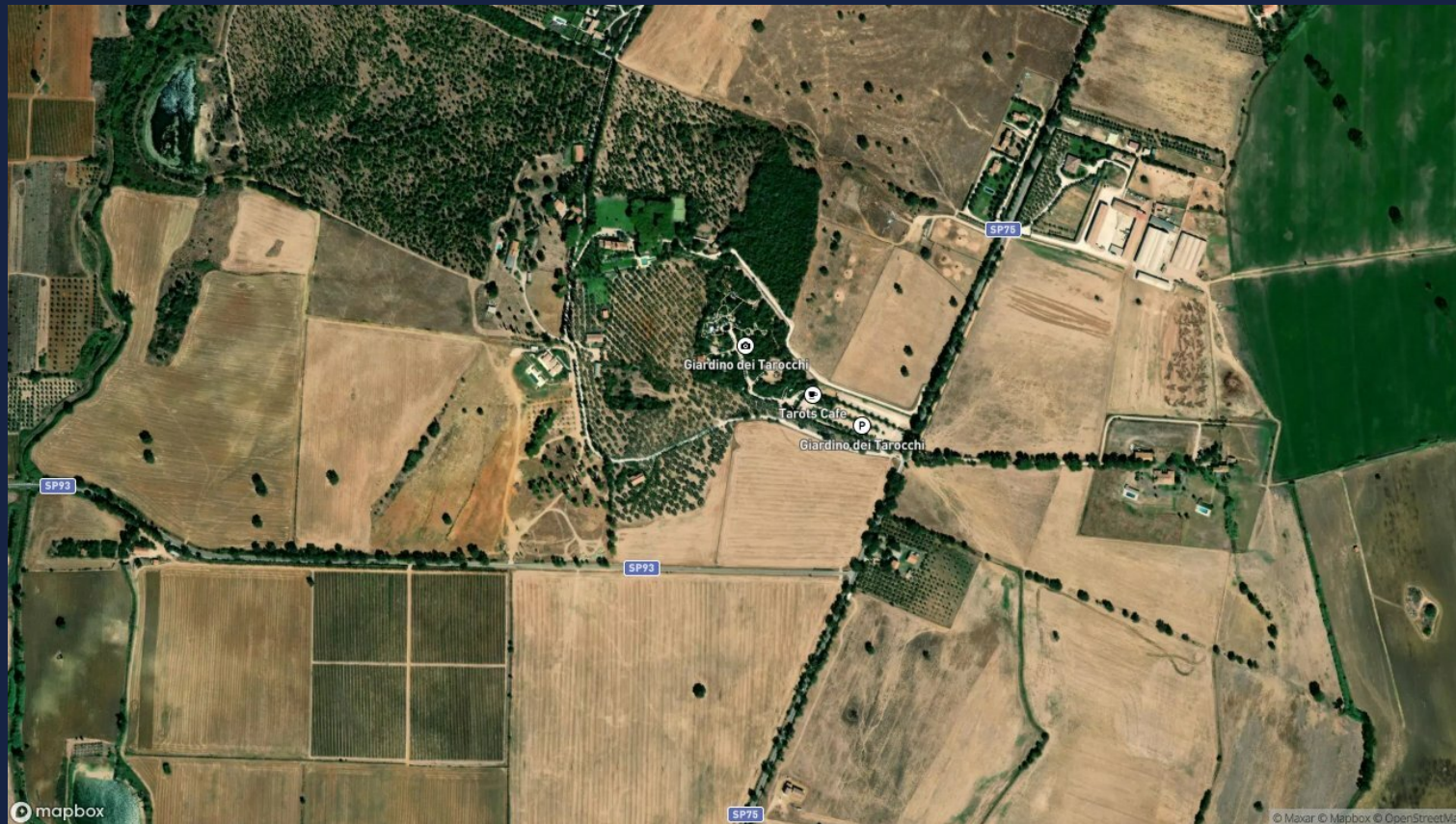
Price: € 1,800,000.00

Reference Code: 10928



Rooms	Bathrooms	Square Footage	Garden/Terrace	Energy Class	Status
12	7	250 Sq. Ft.	15000 Sq. Ft.	A+	Ottimo - Ristrutturato

## Location Overview



## Accessibility Highlights

**SEA-LAKE**

**HIGHWAY**

**TRANSPORT**

**SERVICES**

**PARKING**

**10 Km**

**4 Km**

**6 Km**

**6 Km**

**10 m**

Additional Points of Interest: Aeroporto di Pisa 210 km (2'15); Aeroporto di Firenze 215 km (2'40); Aeroporto di Bologna 290 km (3'30); Aeroporto di Roma 150 km (2'00);

Capalbio 12 km (0'15); Orbetello 35 km (0'40); Monte Argentario 40 km (0'45); Grosseto 50 km (0'55); Castiglione della Pescaia 75 km (1'10); Massa Marittima 120 km (1'20); Follonica 100 km(1'10); Siena 130 km (1'43); Firenze 200km (2'45); Pisa 215 km (2'30); Livorno 260km (3'20); Abetone 280 km (3'50)

Bar 10 km (0'15); Ristorante 13km (0'17); Banca 14 km (0'18); Supermercato 14 km (0'18); Golf Club 38 km (0'40)



































































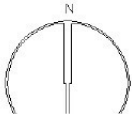
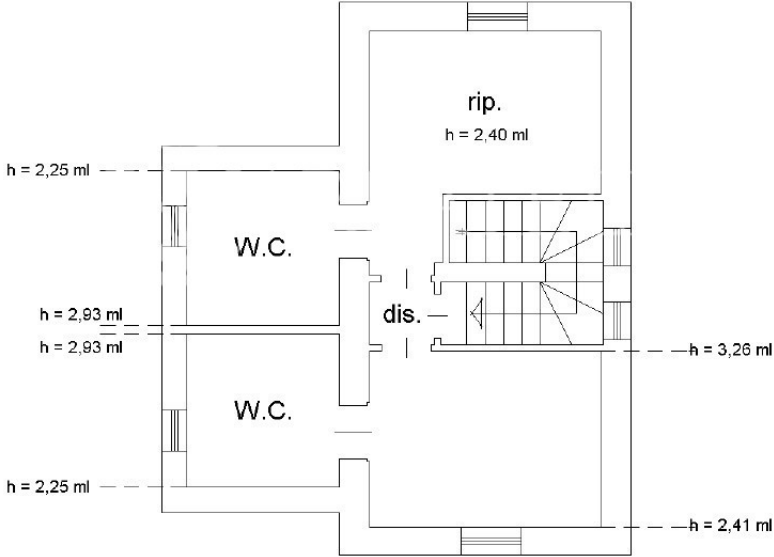






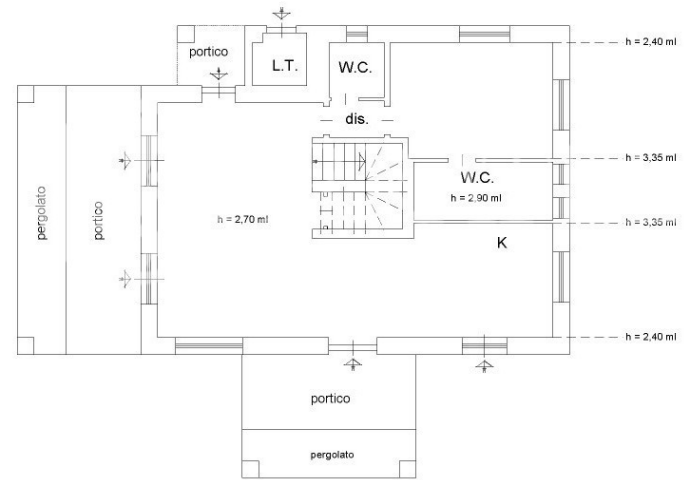


# PIANO PRIMO



11/05/2012 10:00:00 AM

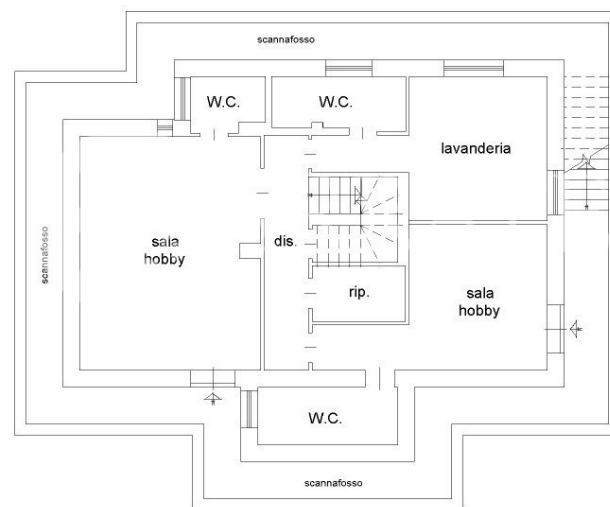
## PIANO TERRA



053356 - Richiesta: 1XANNP9J0D0Z2138T

## PIANO S1 - INTERRATO

h = 2,40 ml



# PLANIMETRIA PIANO TERRA



10 metri





## ROMA

Via di San Giacomo, 18  
00187 Roma  
Tel: (+39) 0693054569  
info@luxuryhomes.it

## FIRENZE

Via Roma, 4  
50123 Firenze  
Tel: (+39) 055212893  
firenze@luxuryhomes.it



## CETONA

Piazza G. Garibaldi, 29  
53040 Cerona (SI)

## PIENZA

Loc. Botteghino di Palazzo Massaini, 9  
53026 Pienza (SI)

## MONTEPULCIANO

Via di Gracciano del Corso, 6  
53045 Montepulciano (SI)

## GROSSETO

Via A. Bertani, 16  
58100 Grosseto

